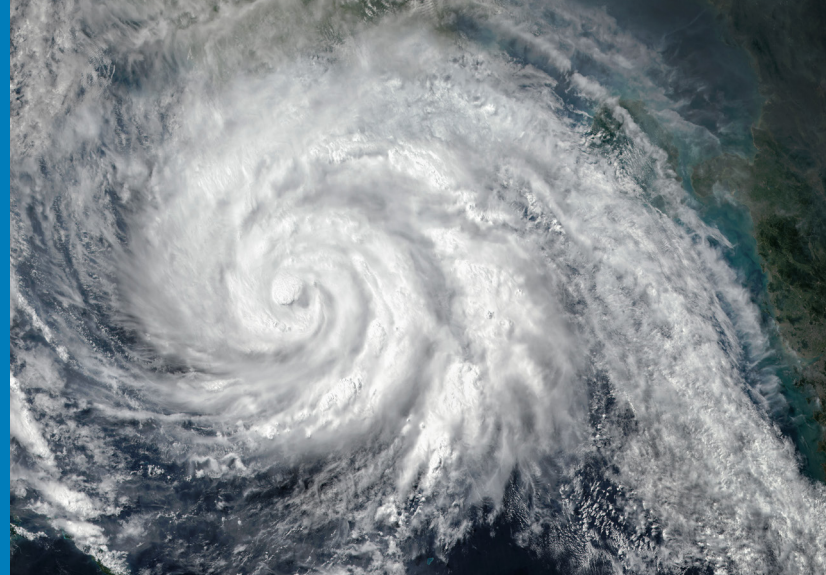


# 2024 Hurricane Season

A data-driven review of PowerSecure's performance through the storm

Hurricanes are nothing new to the American Southeast. From June 1 to November 30, businesses keep a closer eye on weather reports to stay as prepared as possible should a storm hit. Business leaders understand their critical role in supporting communities during challenging times, from providing essential goods and services to maintaining a sense of normalcy. Preventing downtime and ensuring your doors stay open is more than just a cost-saving strategy when your community and customers rely on your business.



The 2024 hurricane season, marked by destructive storms like Hurricanes Helene and Milton, placed unprecedented pressure on the power grid across the southeastern US. Areas faced widespread power outages, some lasting for weeks, as powerful winds and flooding damaged transmission lines and substations.

## 2024 Hurricane Season by the numbers

**17**  
Named Storms

**11**  
Hurricanes

**11 M**  
Customers without Power

**30"**  
Rainfall in Western NC attributed to Hurricane Helene

**150**  
MPH Sustained Winds of Hurricane Milton

The extended loss of electricity underscored the critical need for resilient energy solutions. Businesses, first responders and local organizations relied on the limited power available, coordinated relief efforts and ensured access to essential services.

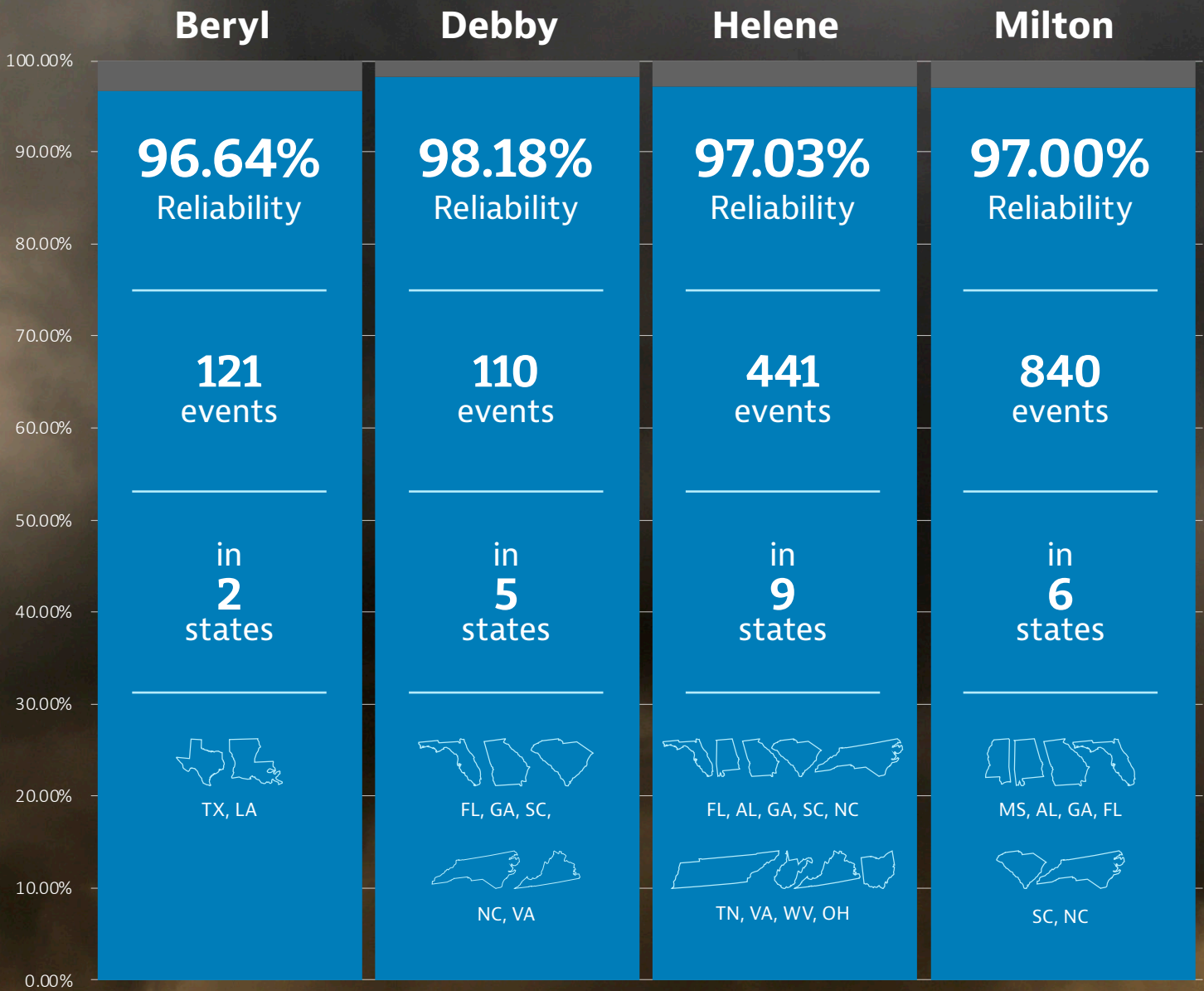
### PowerSecure Solutions

At PowerSecure, we empower businesses to withstand the storm and lead through recovery with speed and resilience. We are committed to ensuring reliable power solutions for organizations that are the backbone of their communities, especially during times of crisis.

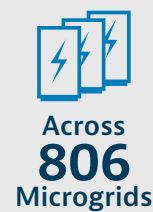
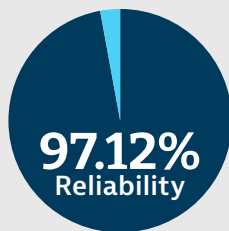
Customers saved an estimated **\$85M** in 2024

After fuel, our customers saved an estimated \$85 million from operating payments and discounts for the units participating in load management.

# PowerSecure in the Storm



**2024**  
YTD Totals





Our PowerControl monitoring system stays ahead of the storm, so we can help our customers prepare and remain proactive to grid disturbances.

Our comprehensive monitoring systems ensured that PowerSecure rapidly mobilized resources to meet the surge in demand for emergency power, managing 1,571 storm-related events across 806 microgrids.

The swift response of our service team resulted in 408 emergency dispatches, achieving a remarkable reliability rate of 97.12% despite facing historic flooding and the compounded impact of multiple hurricanes like Beryl, Debby, Helene and Milton.

### Supporting Resilience

**In the wake of the 2024 hurricane season, the resilience of our customers has been a testament to the strength of collective action.** PowerSecure not only delivered reliable energy solutions but also played a pivotal role in helping businesses reopen quickly, saving communities time and resources. As we look to oncoming storms and more extreme weather, we remain committed to providing energy resilience and reducing downtime, ensuring our customers are ready to serve and support.

**Let's Build Resilient Communities Together**

Learn how PowerSecure can protect your business from future storms.

Visit us online at [PowerSecure.com](https://PowerSecure.com).

